



## BULLETIN No. 2

### Removal of chicane

Due to the large amounts of rainfall that have come and the rainfall that has been predicted, we see ourselves having to remove the chicane on SS3/6 on total of km 10.75. Driving book page 19 block 7. The basic structure on the surface will not withstand the heavy load that all the cars will bring.

### Relocation of service park 2

The original plan to have service park 2 behind the town hall is no longer possible due to excavation work. New service park 2 is therefore located at Förch. The address is: Østre Blixrud vei 4, 1940 Bjørkelangen.

Please see the map on the next page.

Bjørkelangen 07. June 2024

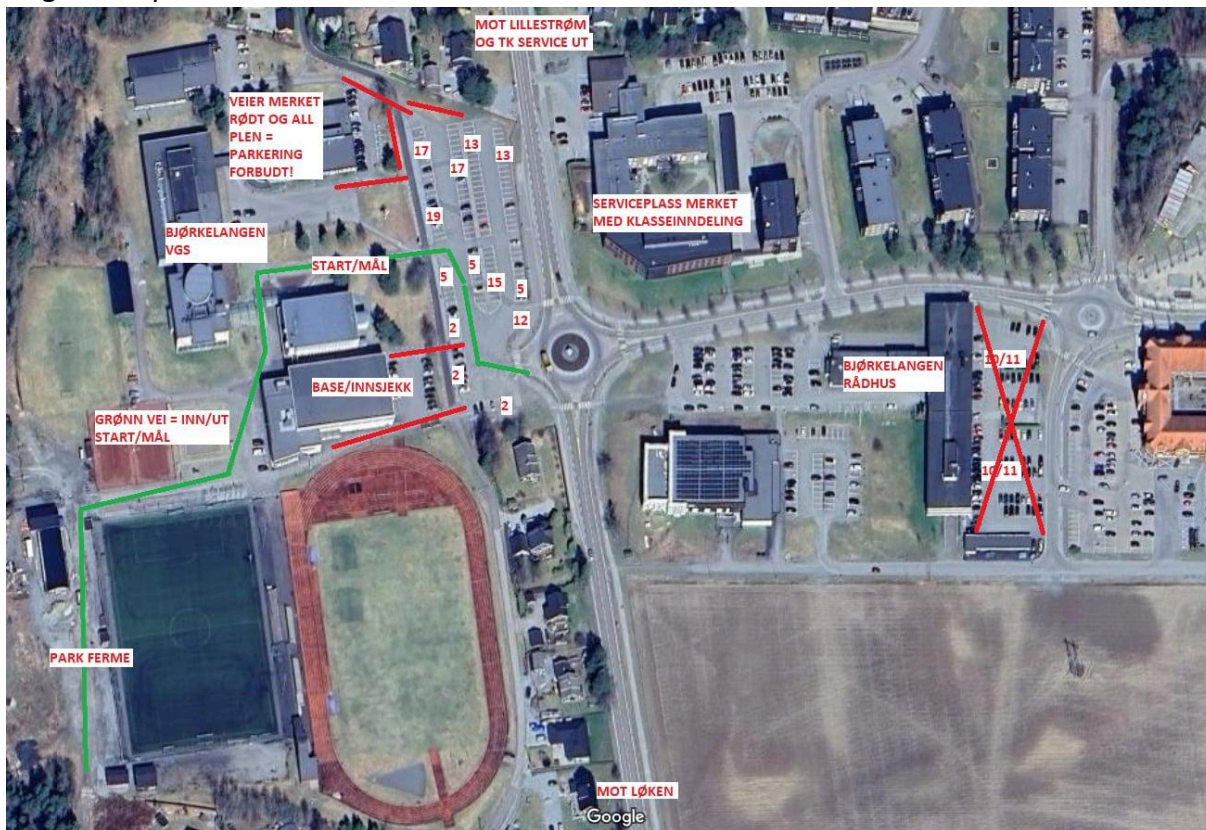
Ole Gunnar Hoel  
Clerk of the course



AURSKOG-HØLAND



Original map





AURSKOG-HØLAND



NM

New map

